



“One to one” immediate-loading implant-prosthetic rehabilitation: a case report

F. Inchingolo, F. Carbotti, G. Dipalma, M. Serafini, M. Marrelli, A.M. Inchingolo,
S. di Teodoro, A. Palladino, M. De Carolis, A.D. Inchingolo

AIM: The aim of the present study is to show the aesthetic and functional advantages of a “one to one” immediate-loading protocol, in terms of proper distribution of occlusal loads.

MATERIALS AND METHODS: The clinical case concerns a 54-year-old male patient with a mobile prosthesis. At first, 6 implants (self-tapping with deep spirals and wrinkled surface) were inserted to fill the gaps of the mobile prosthesis. Then, we performed a crestal sinus lift and 5 implant insertions to restore the normal occlusion. In the immediate postoperative period of the first 6 implants, which had an excellent primary stability, we placed a temporary prosthesis acting as a surgical guide; the case was finished by zirconia-ceramic single crowns.

RESULTS: X-ray examination after 6 months revealed good implant stability, without healing defects and bone dehiscence and with an excellent morphology of peri-implant soft tissues.

DISCUSSION AND CONCLUSIONS: The choice of immediate loading has an aesthetic advantage, because allows for an immediate resolution of edentulism and an excellent mucogingival aspect, and a functional advantage, because adequate loads in the immediate postsurgical period lead to osseointegration;

“One to one” protocols allow to transfer the occlusal load on every implant pillar, with a reduced risk of overload and implant loss. They also allow to achieve an appearance similar to natural teeth and an easier oral hygiene.

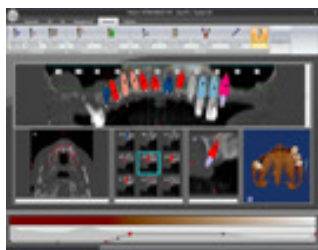


Fig.1 Denta-scan

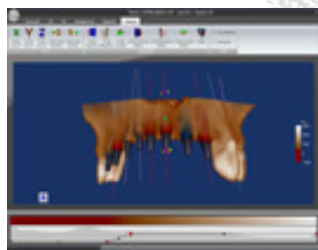


Fig.2 3D reconstruction of the upper jaw

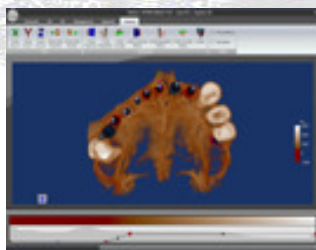


Fig.3
Temporary
prosthesis
acting as a
presurgical
template
with landmarks

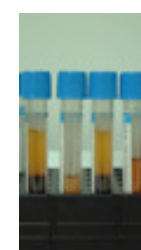


Fig.4 PRP

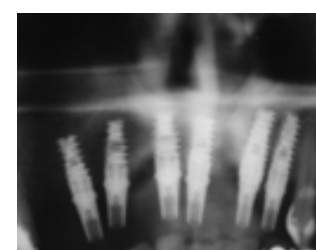


Fig.5 Postsurgical OPT



Fig.6 Abutment to parallelize



Fig.7 In situ temporary prosthesis



Fig.8 Zirconia-ceramic single crowns: an occlusal view



Fig.9 Right lateral view

REFERENCES

- Testori T, Galli F, Del Fabbro M. “IL CARICO IMMEDIATO: la nuova era dell’implantologia orale”. Acme 2009
Vandamme K, Naert I, Geris L, Vander Sloten J, Puers R, Duyck J. Influence of controlled immediate loading and implant design on peri-implant bone formation. *J. Clin. Periodontol* 2007c;34(2):172-181
Romanos G.E., Testori T, Degidi M, Piattelli A. Histologic and histomorphometric findings from retrieved, immediately occlusally loaded implants in humans. *J. Periodontol.* 2005;76: 1823-1832